



Oradapt is an absorbable dental membrane for guided bone regeneration made of purified collagen without cross-linking or chemical treatment.

PRODUCT COMPARISON (ORADAPT VERSUS B PRODUCT)

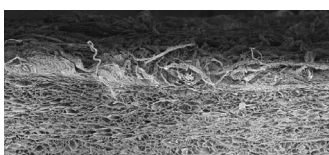
Better Stability

- Oradapt functions as a barrier to provide the prolonged space maintenance with the long resorption period.
- Oradapt is biodegradable and absorbed within 24 weeks after implantation.

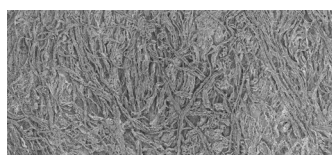
Better Tissue Integration

PRODUCT	POROSITY
Oradapt	80.5% ± 6.08%
B product	65.7% ± 2.8%

Oradapt has high porosity and specific surface area, which support excellent blood supply. This ensures optimal regeneration of bone and soft tissue.



[The cross-section view]



[The plain view]

ADVANTAGE OF THE PRODUCT

Better Stability

- Excellent tear resistance
- Prolonged barrier function and duration

Better Tissue Integration

- Excellent assistance for fast blood supply to the defect
- Lower incidence of soft tissue dehiscence

Better Handling

- No need of distinction, either side can be placed against the defect
- Fast hydration and excellent tensile strength
- Good adaptation to various defects



Better Handling



dhpsupply.com
800.626.2163



Before hydration

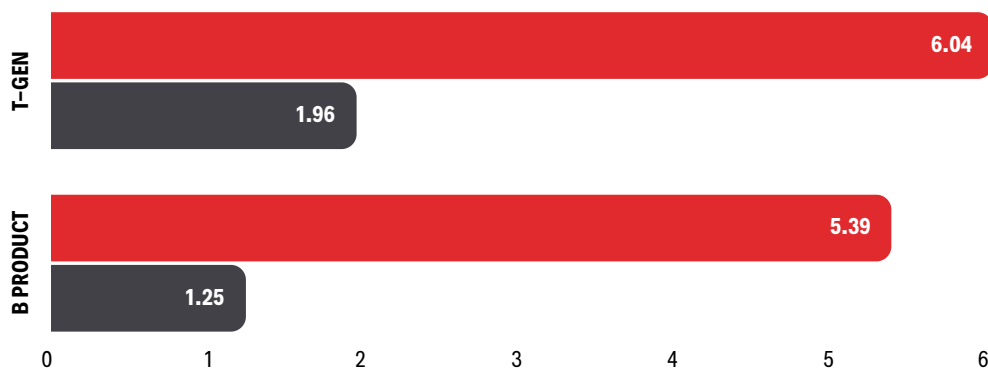


After hydration, excellent tensile strength

TENSILE STRENGTH TEST

Oradapt has excellent tensile strength and thus, it can enable better handling properties for tear resistance in surgery than other products. In addition, Oradapt features excellent adaptation to surface contour due to fast hydration and excellent flexibility.

● DRY ● WET



SUTURE PULLOUT STRENGTH TEST

The suture pullout strength of Oradapt is higher than a comparable membrane due to its distinct structure. It enables enough mechanical strength and low risk of detachment.

● DRY ● WET

